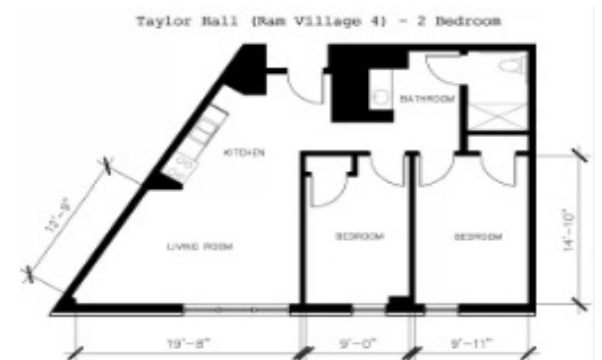




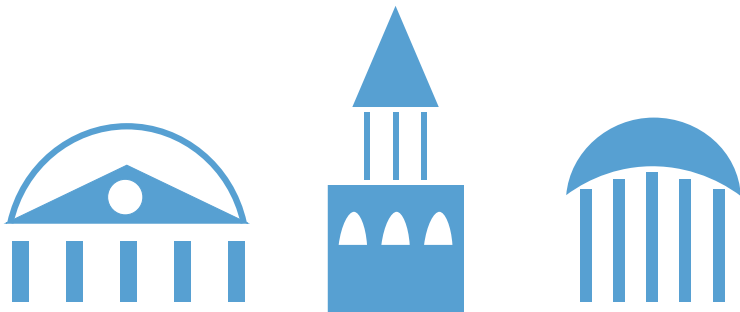
# Taylor Residence Hall

## Hall & Room Details

<b>Hall Population</b>	247
<b>Elevator</b>	Yes
<b>Fire Safety</b>	Smoke detectors, alarms and sprinkler system
<b>Amenities</b>	study rooms, kitchen and ice machine, TV room, lounges, recreation room, vending machines
<b>Avg. Room Measurements</b>	9' x 14'
<b>Air-Conditioning</b>	Central air-conditioning in all apartments
<b>Room Furniture</b>	1 dresser, 1 desk, 1 desk chair, 1 twin bed
<b>Closet</b>	Closet with door
<b>Mattress Size</b>	Twin XL - Requires twin XL sheets
<b>Bathroom</b>	1-2 People share a bathroom



Visit: <https://housing.unc.edu/live/explore-the-halls/residences-halls/taylor-hall-ram-village-4>



## CONFERENCE SERVICES

<https://conferences.unc.edu>

[conferenceservices@unc.edu](mailto:conferenceservices@unc.edu)

(919) 962-782