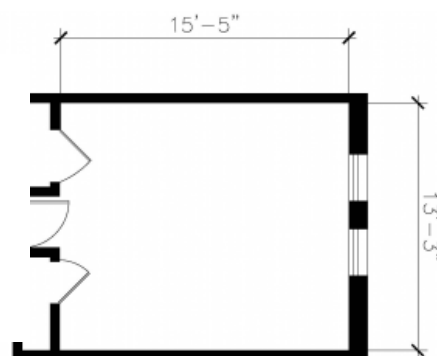
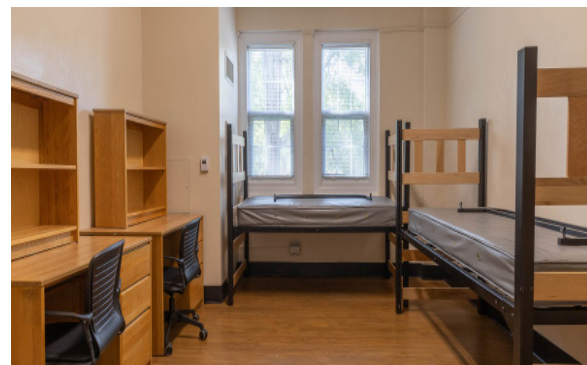




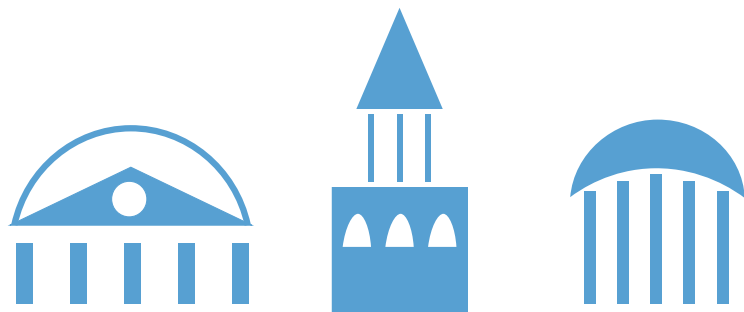
Stacy Residence Hall

Hall & Room Details

Hall Population	93
Elevator	No
Fire Safety	Smoke detectors, alarms and sprinkler system
Amenities	study rooms, kitchen and ice machine, laundry, TV room, lounges, recreation room, vending machines
Avg. Room Measurements	12' x 15'
Air-Conditioning	Central HVAC
Room Furniture	2 dressers, 2 desks, 2 chairs, 2 beds
Closet	Closet with door
Mattress Size	Twin XL - Requires twin XL sheets
Bathroom	Corridor Style bathrooms on each floor



Visit: <https://housing.unc.edu/live/explore-the-halls/residences-halls/stacy>



CONFERENCE SERVICES

<https://conferences.unc.edu/>

conferenceservices@unc.edu

(919) 962-7829