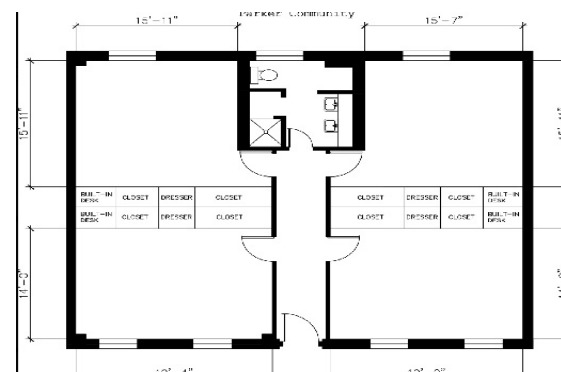




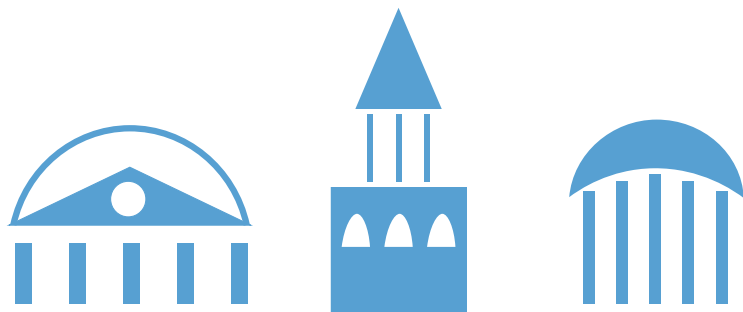
Parker Residence Hall

Hall & Room Details

Hall Population	167
Elevator	No
Fire Safety	Smoke detectors, alarms and sprinkler system
Amenities	Study rooms, kitchen and ice machine, laundry in Avery, TV room, lounges, vending machines, CCI print station
Avg. Room Measurements	Front Rooms: 13' x 13'; Back Rooms: 11' x 16'
Air-Conditioning	Window units in all rooms
Room Furniture	1 shared dresser, 2 desks, 2 desk chairs, 2 twinXL beds
Closet	Built-in, no doors
Mattress Size	Twin XL - Requires twin XL sheets
Bathroom	Suite bathrooms have 1 toilet, 2 sinks, 1 shower



Visit: <https://housing.unc.edu/live/explore-the-halls/residences-halls/parker>



CONFERENCE SERVICES

<https://conferences.unc.edu/>

conferenceservices@unc.edu

(919) 962-7829