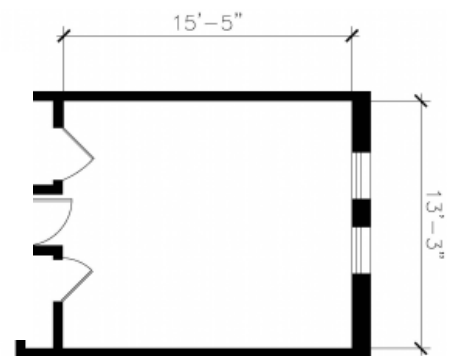




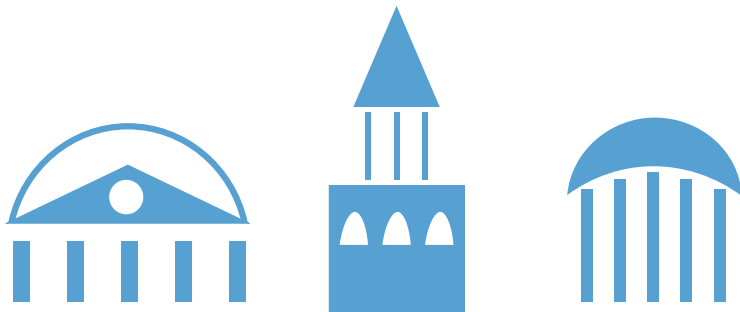
# Old East Residence Hall

## Hall & Room Details

|                               |   |
|-------------------------------|---|
| <b>Hall Population</b>        | 67  |
| <b>Elevator</b>               | Yes   |
| <b>Fire Safety</b>            | Smoke detectors, alarms and sprinkler system                                      |
| <b>Amenities</b>              | study rooms, kitchen and ice machine, laundry, TV room, lounges, vending machines |
| <b>Avg. Room Measurements</b> | 12' x 14'   |
| <b>Air-Conditioning</b>       | Central A/C in all rooms  |
| <b>Room Furniture</b>         | 2 dressers, 2 desks, 2 desk chairs, 2 twin beds                                   |
| <b>Closet</b>                 | Closet with door  |
| <b>Mattress Size</b>          | Twin XL - Requires twin XL sheets   |
| <b>Bathroom</b>               | Corridor Style bathrooms on each floor  |



Visit: <https://housing.unc.edu/live/explore-the-halls/residences-halls/old-east>



## CONFERENCE SERVICES

The University of North Carolina at Chapel Hill

carolina  
HOUSING

<https://conferences.unc.edu>  
conferenceservices@unc.edu

(919) 962-782