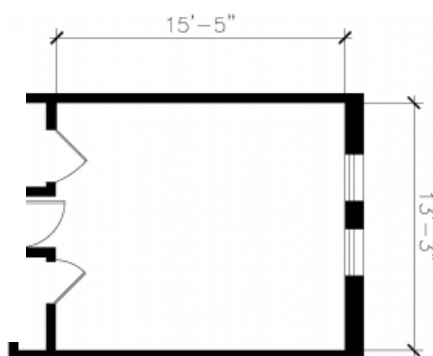
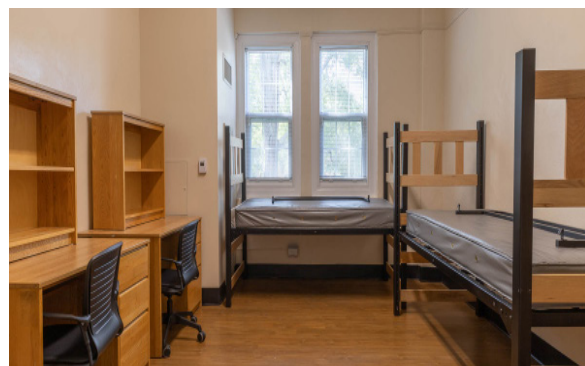




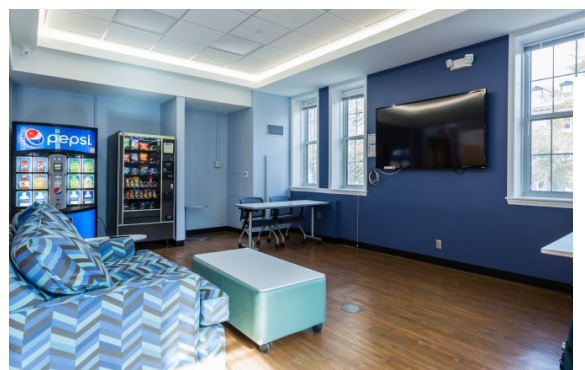
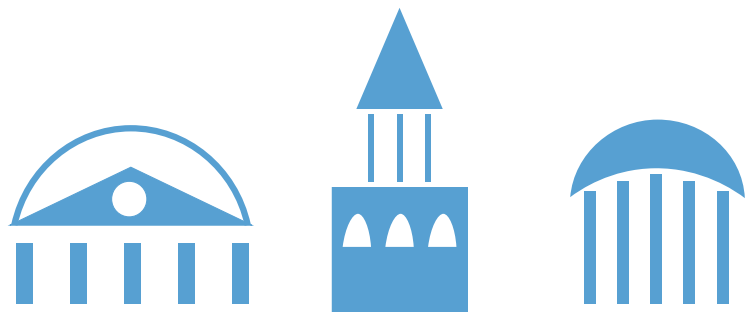
# Manly Residence Hall

## Hall & Room Details

<b>Hall Population</b>	92
<b>Elevator</b>	No
<b>Fire Safety</b>	Smoke detectors, alarms and sprinkler system
<b>Amenities</b>	study rooms, kitchen and ice machine, laundry, TV room, lounges, recreation room, vending machines
<b>Avg. Room Measurements</b>	13' x 15'
<b>Air-Conditioning</b>	Central A/C in all rooms
<b>Room Furniture</b>	2 dressers, 2 desks, 2 desk chairs, 2 twin beds
<b>Closet</b>	Closet with door
<b>Mattress Size</b>	Twin XL - Requires twin XL sheets
<b>Bathroom</b>	Corridor Style bathrooms on each floor



Visit: <https://housing.unc.edu/live/explore-the-halls/residences-halls/manly>



## CONFERENCE SERVICES

<https://conferences.unc.edu>

[conferenceservices@unc.edu](mailto:conferenceservices@unc.edu)

(919) 962-782