

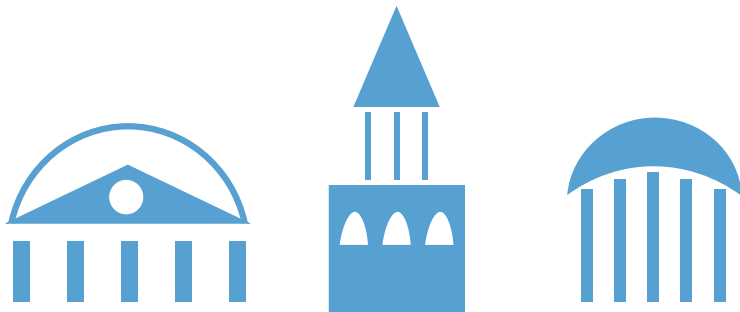
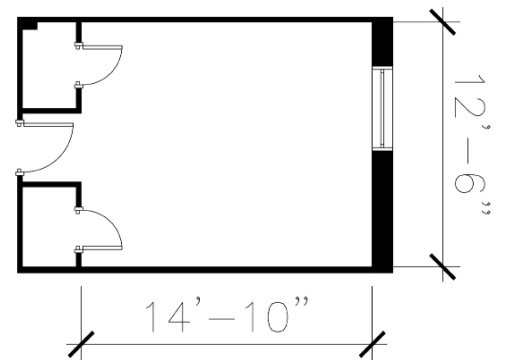


# Joyner Residence Hall

## Hall & Room Details

<b>Hall Population</b>	168
<b>Elevator</b>	Yes
<b>Fire Safety</b>	Smoke detectors, alarms and sprinkler system
<b>Amenities</b>	study space, kitchen, laundry, vending machines, renovated spa style bathrooms
<b>Avg. Room Measurements</b>	12' x 15'
<b>Air-Conditioning</b>	Central Heating and Air
<b>Room Furniture</b>	2 dressers, 2 desks, 2 desk chairs, 2 twin beds
<b>Closet</b>	Closet with door
<b>Mattress Size</b>	Twin XL - Requires twin XL sheets
<b>Bathroom</b>	Corridor Style bathrooms on each floor

Visit: <https://housing.unc.edu/live/explore-the-halls/residences-halls/joyner>



## CONFERENCE SERVICES

The University of North Carolina at Chapel Hill

carolina  
HOUSING

<https://conferences.unc.edu>  
[conferenceservices@unc.edu](mailto:conferenceservices@unc.edu)

(919) 962-782