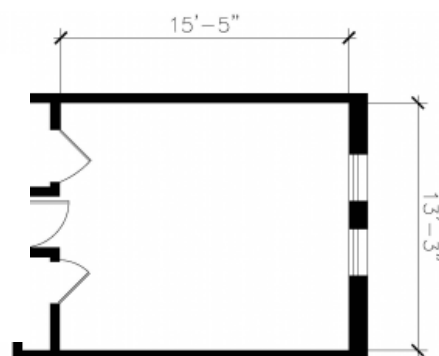
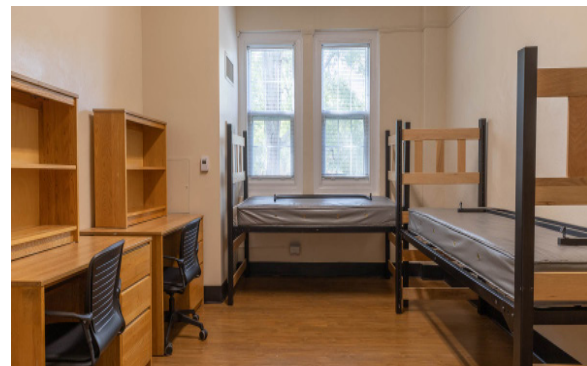


Grimes Residence Hall

Hall & Room Details

Hall Population	88
Elevator	No
Fire Safety	Smoke detectors, alarms and sprinkler system
Amenities	study rooms, kitchen and ice machine, laundry, TV room, lounges, recreation room, vending machines
Avg. Room Measurements	13' x 15'
Air-Conditioning	Central A/C in all rooms
Room Furniture	2 dressers, 2 desks, 2 desk chairs, 2 twin beds
Closet	Closet with door
Mattress Size	Twin XL - Requires twin XL sheets
Bathroom	Corridor Style bathrooms on each floor

Visit: <https://housing.unc.edu/live/explore-the-halls/residences-halls/grimes>



CONFERENCE SERVICES

The University of North Carolina at Chapel Hill

carolina
HOUSING

<https://conferences.unc.edu/>
conferenceservices@unc.edu

(919) 962-7829