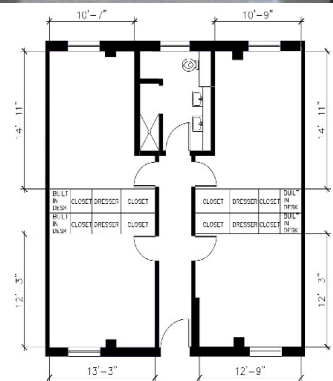




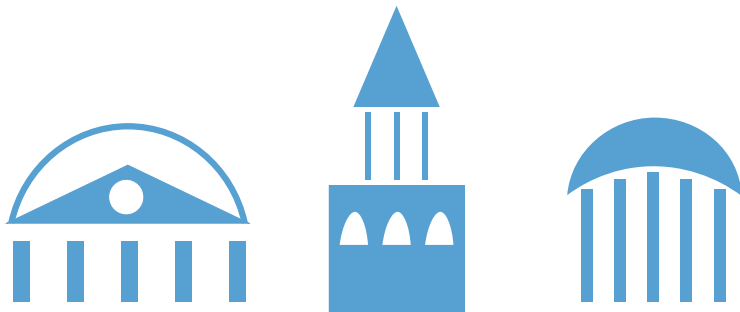
# Craige Residence Hall

## Hall & Room Details

<b>Hall Population</b>	636
<b>Elevator</b>	Yes
<b>Fire Safety</b>	Smoke detectors, alarms and sprinkler system
<b>Amenities</b>	Study rooms, kitchen and ice machine, laundry, TV room, lounges, basketball court, vending machines, CCI print station
<b>Avg. Room Measurements</b>	Front Rooms: 12' x 13'. Back Rooms (by bathroom): 13' x 15'
<b>Air-Conditioning</b>	Window units
<b>Room Furniture</b>	1 shared dresser, 2 desks, 2 desk chairs, 2 twin beds
<b>Closet</b>	Built-in, no doors
<b>Mattress Size</b>	Twin XL - Requires twin XL sheets
<b>Bathroom</b>	Suite bathrooms have 1 toilet, 2 sinks, 1 shower



Visit: <https://housing.unc.edu/live/explore-the-halls/residences-halls/craige>



# CONFERENCE SERVICES

<https://conferences.unc.edu/>  
[conferenceservices@unc.edu](mailto:conferenceservices@unc.edu)

(919) 962-7829