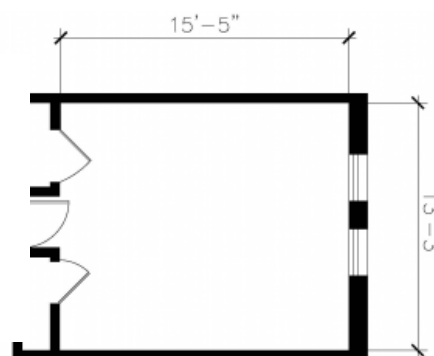




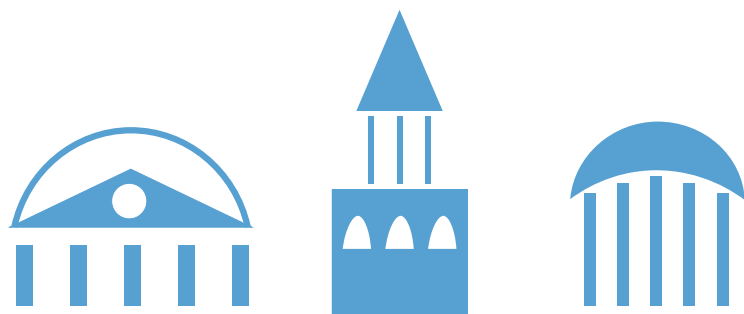
# Avery Residence Hall

## Hall & Room Details

|                               |   |
|-------------------------------|---|
| <b>Hall Population</b>        | 226   |
| <b>Elevator</b>               | No  |
| <b>Fire Safety</b>            | Smoke detectors, alarms and sprinkler system  |
| <b>Amenities</b>              | Study rooms, kitchen and ice machine, laundry, TV room, mailboxes in Parker, lounges, basketball court, vending machines, CCI print station in Parker |
| <b>Avg. Room Measurements</b> | Front Rooms: 12' x 13'; Back Rooms: 10' x 15'   |
| <b>Air-Conditioning</b>       | Window units in all rooms   |
| <b>Room Furniture</b>         | 1 shared dresser, 2 desks, 2 desk chairs, 2 twin beds   |
| <b>Closet</b>                 | Built-in, no door   |
| <b>Mattress Size</b>          | Twin XL - Requires twin XL sheets   |
| <b>Bathroom</b>               | Suite bathrooms have 1 toilet, 2 sinks, 1 shower  |



Visit: <https://housing.unc.edu/live/explore-the-halls/residences-halls/avery>



## CONFERENCE SERVICES

<https://conferences.unc.edu/>

[conferenceservices@unc.edu](mailto:conferenceservices@unc.edu)

(919) 962-7829